

A-Track USB / NCE Interface Unit – Installation – Windows Vista / 7

The **A-Track USB / NCE (ATUN) Interface unit** is based on a commercial USB to Serial Port adapter, the MCP2200EV-VCP device from Microchip, with some customisation of its embedded software.

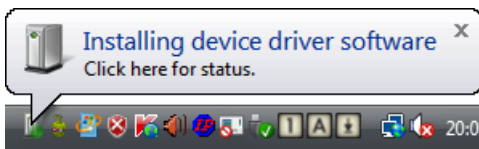
The MCP2200EV-VCP uses standard software drivers which are already part of the Windows operating system but, before using it with A-Track or any other application program, it is necessary to link the appropriate Windows drivers to the device. This is done by loading a driver information file, based on the generic file supplied by Microchip, to your computer. Linking the ATUN Interface unit to the PC only has to be done once per computer, and the required file, **MCP2200_A-Track.inf**, is located on the A-Track distribution CD.

Before connecting the ATUN Interface unit for the first time, ensure that no applications other than this installation file (in WordPad) are running on the PC, and that the active User has administrative rights (this is the normal status when the operating system is either Windows Vista / Windows 7 Starter or Home Editions, but you may need to log on as an Administrator when using Windows Vista / Windows 7 Business, Professional, or Ultimate Editions). Once the ATUN Interface unit has been linked to the Windows drivers it will operate for any User, and with any application program, with or without administrator privileges.

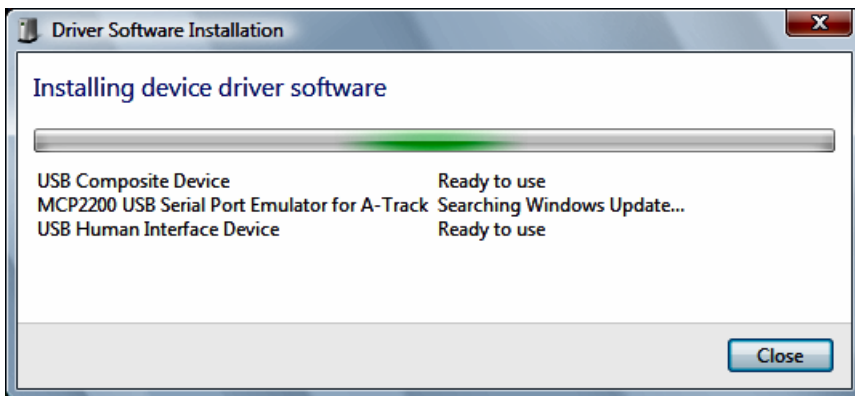
After driver installation is complete, close the WordPad window displaying these instructions before proceeding to install the A-Track software.

Now connect the ATUN Interface unit to any PC USB port using the supplied USB cable. There is no need at this stage to connect the ATUN Interface unit to the NCE Command Station.

After a few seconds you should see a small notice appear above the Taskbar announcing that the operating system has found the ATUN Interface unit, and is attempting to install the required driver software –

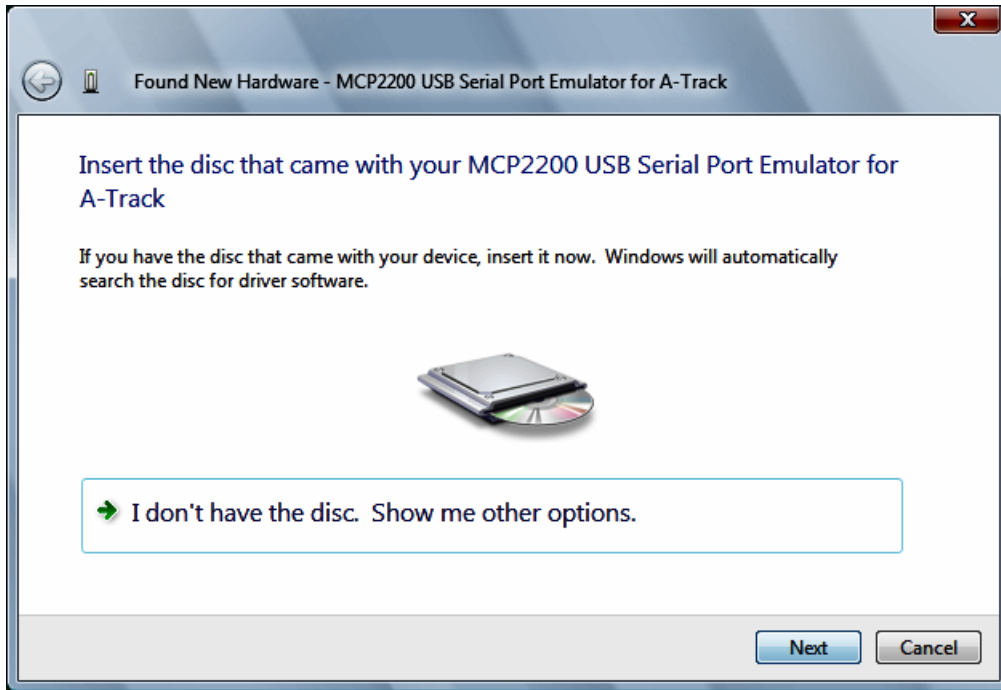


The notice will disappear after a short time, but you can click on the animated icon to which it was pointing and display a small window showing current progress –

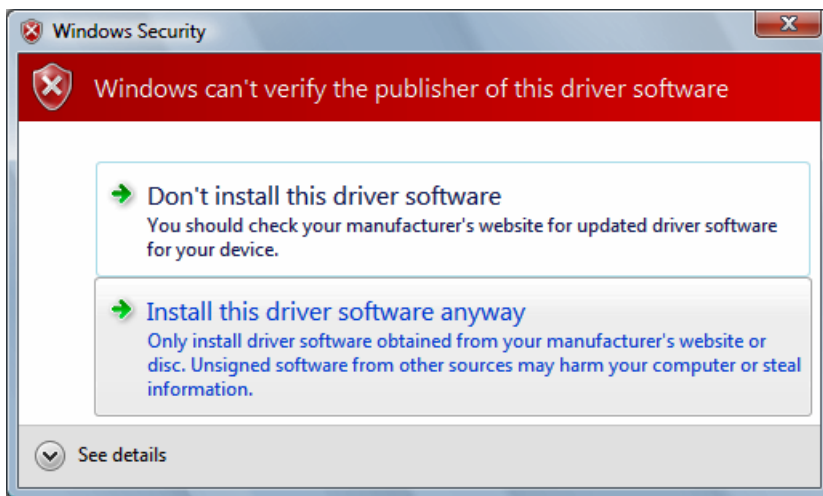


Windows Vista and Windows 7 both take a long time to search through all possible locations for the required software information but, if you wait patiently, a **'Found New Hardware'** window should

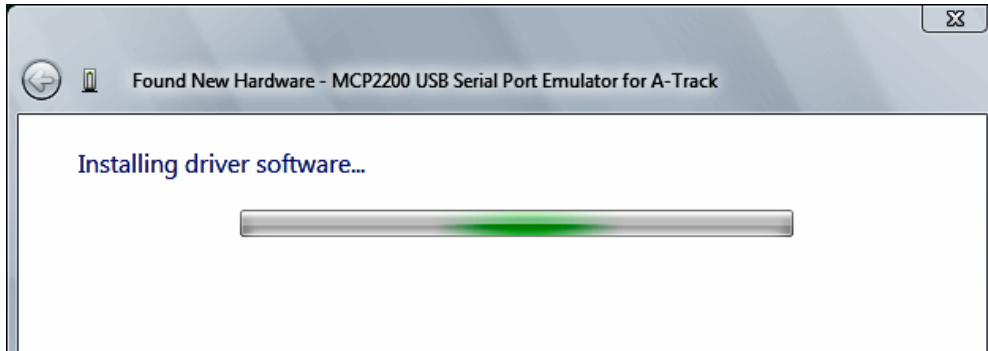
eventually appear, asking you to insert the installation disk for the MCP2200 USB Serial Port Emulator for A-Track. Since this disk should already be in the drive, click **Next** to proceed –



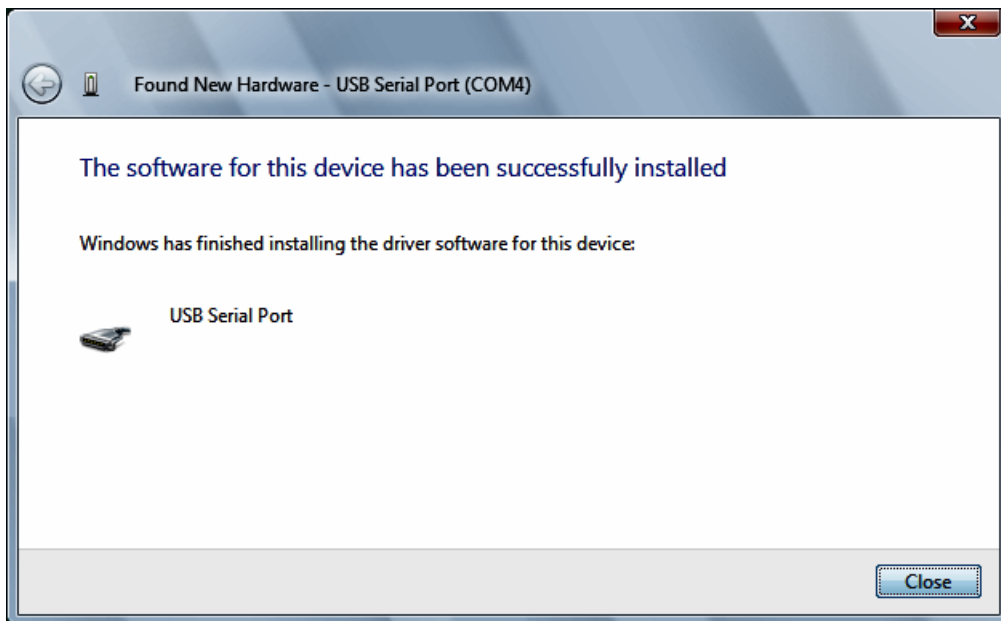
After locating the information file, Windows will display a warning that the driver publisher cannot be verified (since the file has not been formally approved by Microsoft) –



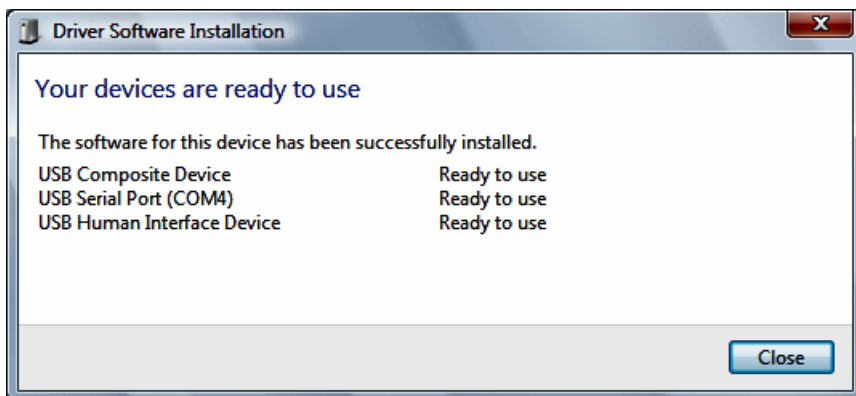
It is perfectly safe to click on '**Install this driver software anyway**' to continue, when a confirmation window will be displayed to show that driver installation is in progress –



Again, both Windows Vista and Windows 7 take a considerable time to locate and link the hardware to the appropriate driver software, but you will eventually be rewarded by a completion notice –

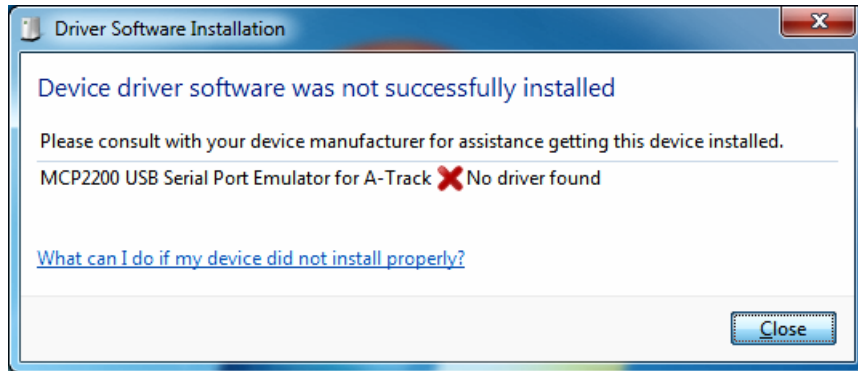
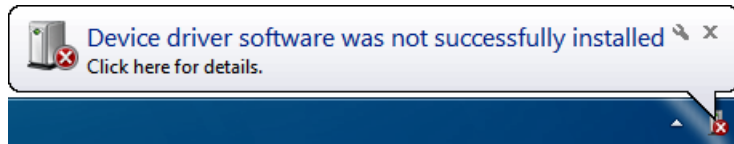


Click **Close** to finish the installation. The Driver Software Installation progress window, if you opened it earlier, will now show that all of the driver components are installed and ready to use, and can also be closed –

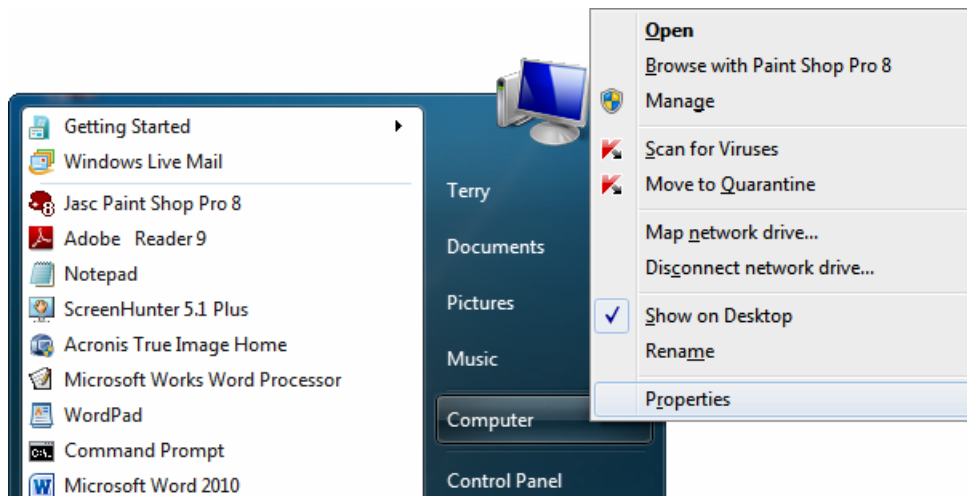


If, for any reason, Windows fails to locate the **MCP2200_A-Track.inf** file or (because the MCP2200 information file is not digitally signed) the additional levels of security applied to any hardware or software installations by Windows Vista and Windows 7 prevent the drivers being installed

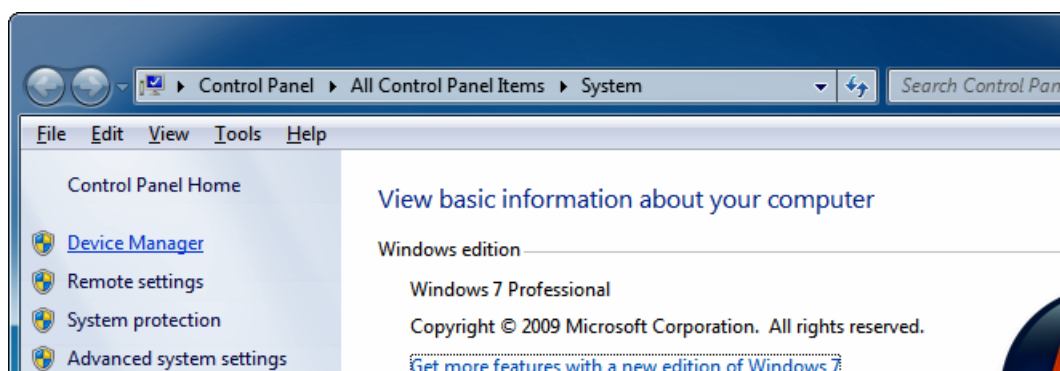
automatically, then you will probably be presented with a notice declaring that Windows has failed to install the drivers required for the ATUN Interface unit, such as those shown below –

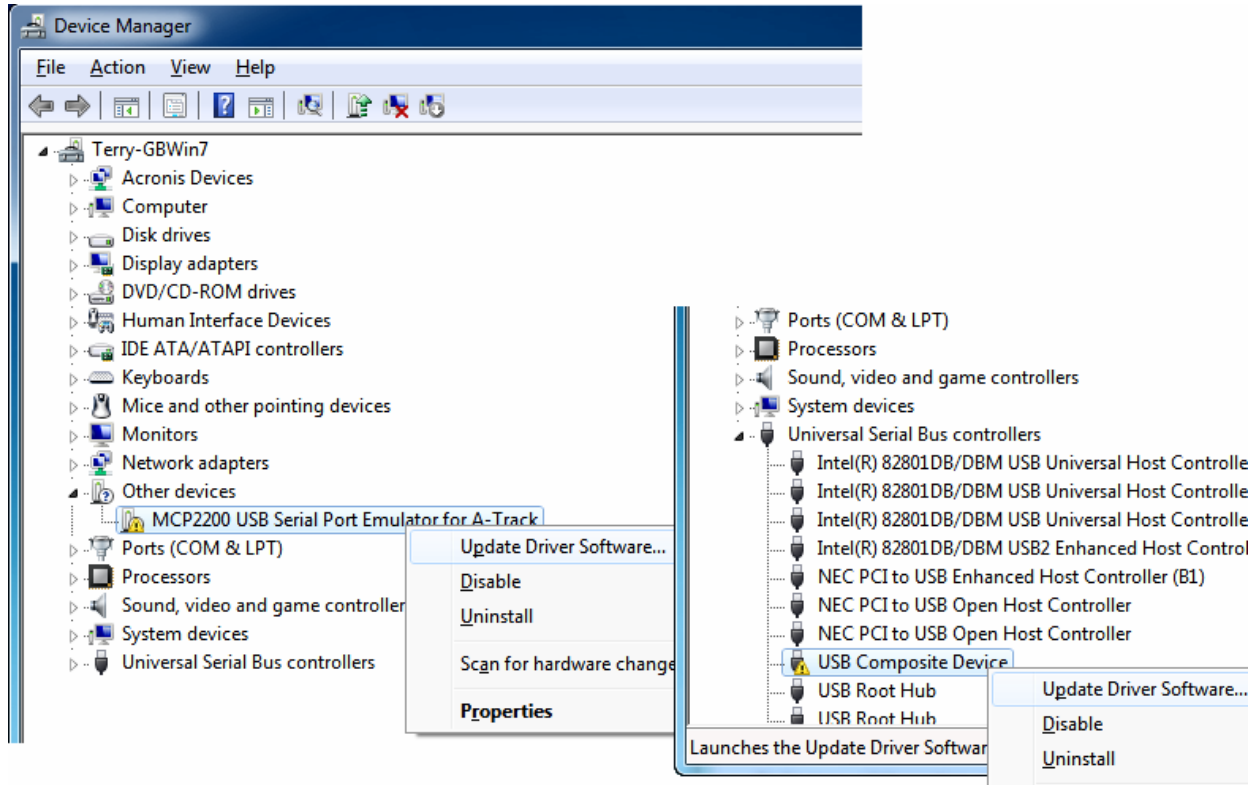


In such a case, although you can try and navigate through the series of subsequent 'help' pages that will be displayed, the simplest way to proceed is to open the **Start Menu** and *right-click* on **Computer**. Then, on the pop-up menu which appears, click on **Properties** –



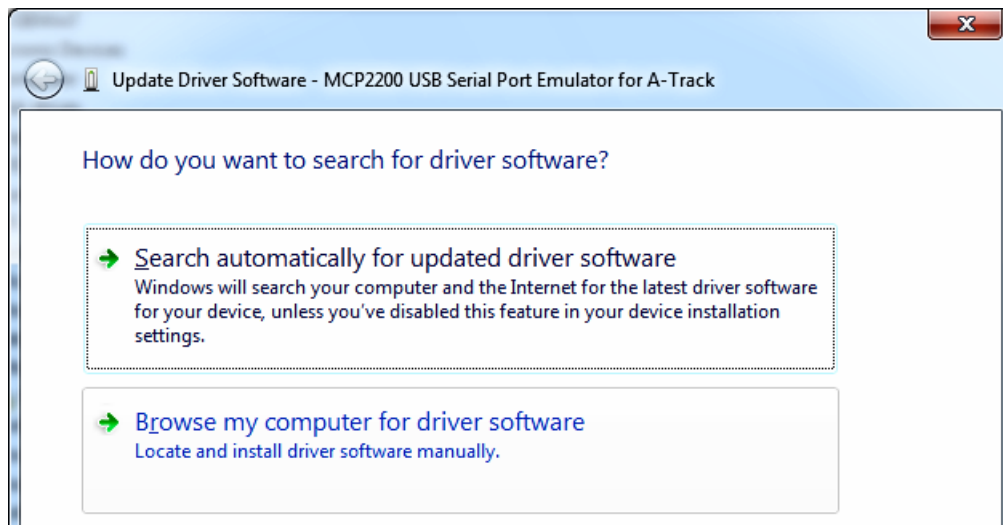
This will display a window containing details of your computer system, where you should locate and click on the link to **Device Manager**. As shown at the top of the window, you can also get to this location by opening Control Panel and selecting System –



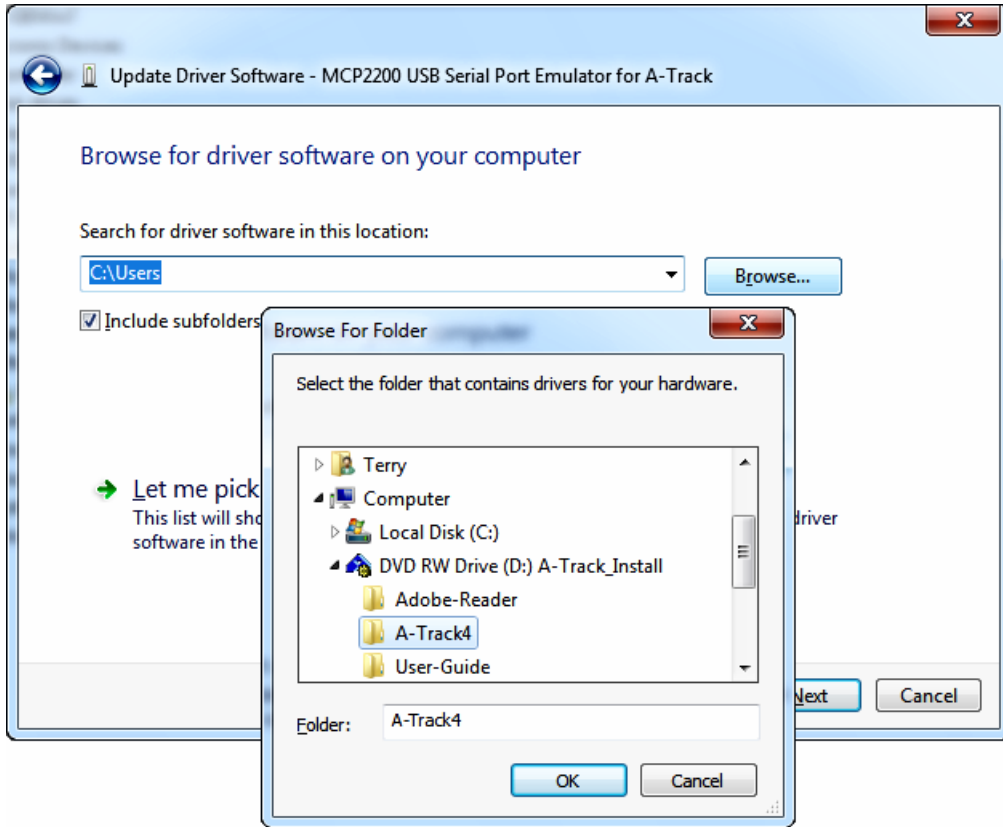


Locate the entry for the **MCP2200** device (usually under **Other devices**, but may occasionally be found under **Universal Serial Bus**, as shown above), then **right-click** on it to display a pop-up menu.

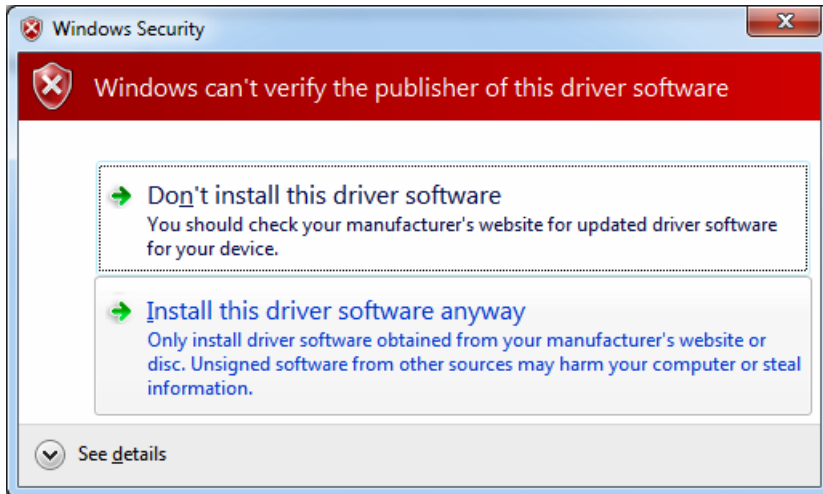
Clicking on **Update Driver Software** will start a software installation wizard where you should first select '**Browse my computer for driver software**' as shown below –



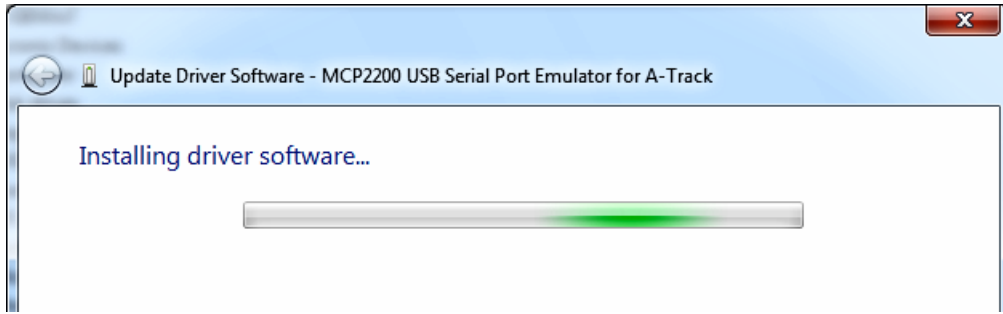
In the next window, click **Browse** to open a second window where you can navigate to the folder (**D:\A-Track4** here) which contains a copy of the **MCP2200_A-Track.inf** file. When the right folder is selected, click the **OK** button to continue – which will also close the Browse For Folder window – then click **Next** to proceed.



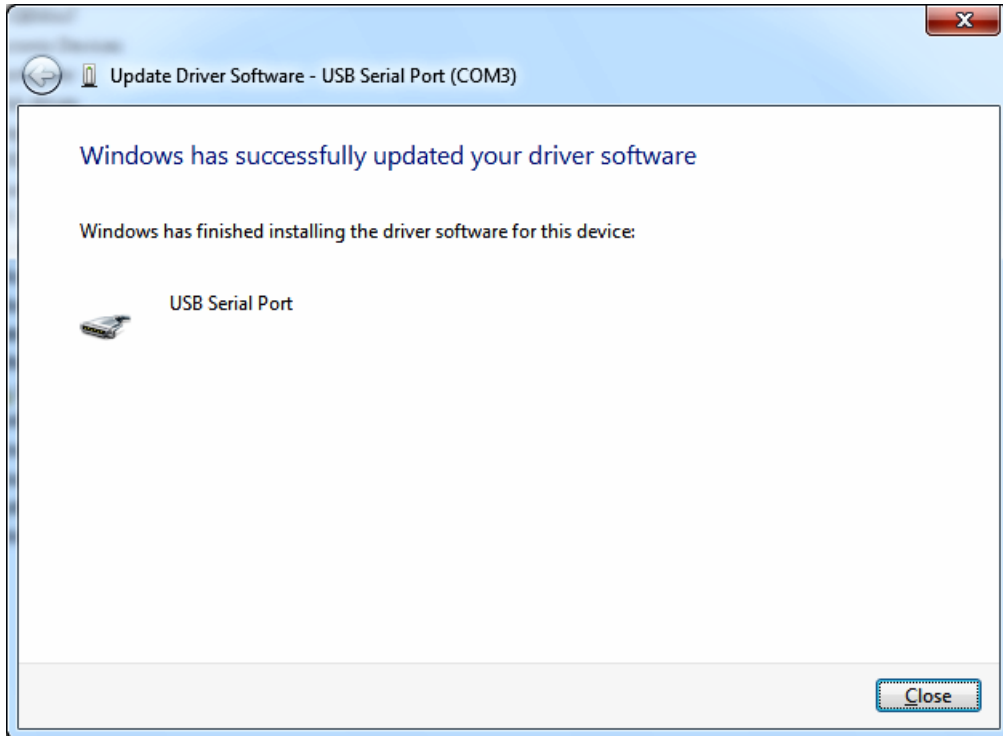
Windows will display a warning that the driver publisher cannot be verified (since the information file has not been formally approved by Microsoft) –



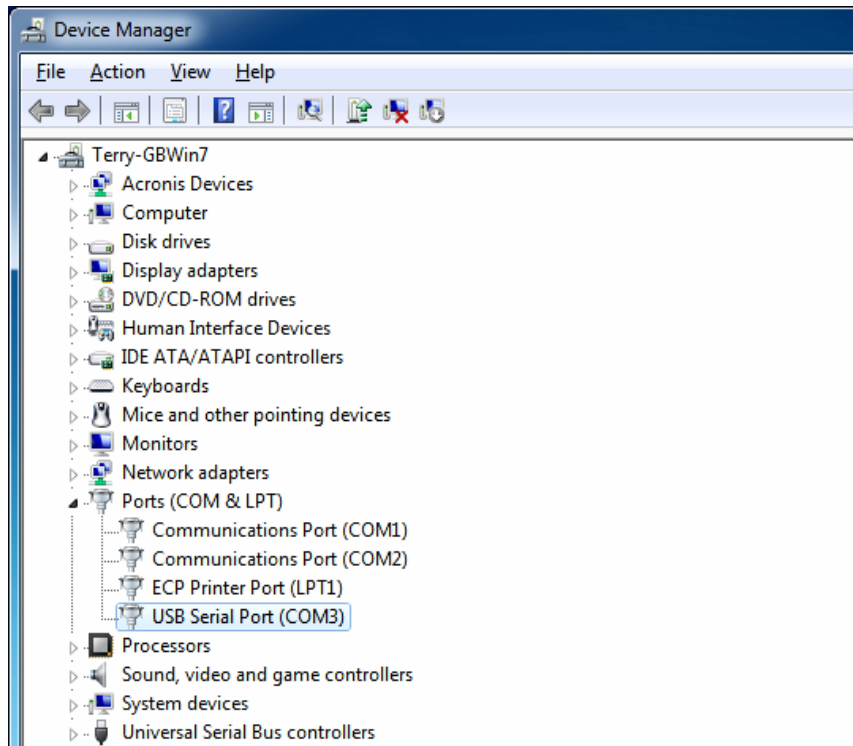
It is perfectly safe to click on '**Install this driver software anyway**' to continue, when a confirmation window will be displayed to show that driver installation is in progress –



You will have to wait patiently until the process completes since, for no obvious reason, this can take a relatively long time. Eventually, in the final window, click **Close** to finish the installation –



Once the Update Driver Software wizard has finished, you can re-open Device Manager and check that the installation is satisfactory. The ATUN Interface unit should appear under the **Ports** heading as a **USB Serial Port** as shown below –



The **COM** number allocated to the port will vary depending on how many other serial ports are present in your computer, and whether any other USB Serial Port devices have been installed prior to the ATUN Interface unit (although not necessarily connected at this time).

A-Track will find the correct USB Serial Port automatically when the program is launched, but you may care to make a note of the number in case you use the ATUN Interface unit as a general-purpose USB to Serial Port converter with some other application software (such as Decoder Pro from JMRI).

The MCP2200 device is quite well-behaved, so that the allocated COM number should remain at the initial installation value every time you switch on your computer.